



CROSSWALK LIGHTING

Illuminated Crosswalks With LED Lights



Crosswalk Illumination



US Reflector Crosswalk LED Light Bars: A cutting-edge technology, these LED light bars show great promise in reducing crosswalk accidents caused by distractions—both from drivers and pedestrians.

Our commitment to enhancing crosswalk safety led us to integrate our road stud lighting into flat panels that seamlessly align with crosswalk markings and zebra crossings. These panels serve as the perfect alert system for distracted drivers and pedestrians approaching the crosswalk. The expansive illuminated area ensures that oncoming traffic cannot overlook them.

The US Reflector CW6 LED Crosswalk Light boasts a low-profile design, rendering it impervious to road surface vehicles. Specifically designed for urban applications, the CW6 enhances crosswalk safety and visibility during nighttime without compromising the aesthetic charm of city streets. Its simple yet elegant design seamlessly blends into urban environments.

The CW6 crosswalk lights can be conveniently controlled using a control box, enabling synchronization with the pedestrian crossing traffic lights.

Moreover, the CW6 Crosswalk LED can also serve as a decorative street lighting fixture, further enhancing the surrounding landscape.

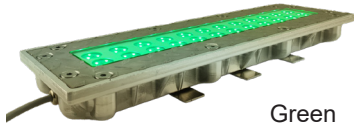
CW6's can be powered with 12V, 24V or solar energy



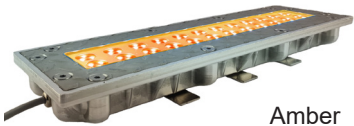
CROSSWALK LIGHTING



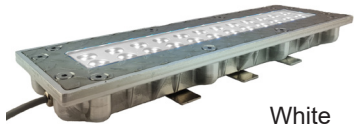
Red



Green



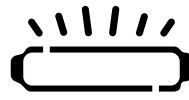
Amber



White



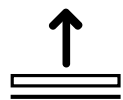
Perfect for
Crosswalks



Large lighted
area for visual
impact



High strength
construction



Low profile
does not effect
motorists

“Ready for All Roads: The US Reflector CW6”

Our road safety solution boasts a robust and enduring structure, certified to meet Standard EN124, class D400. Rigorous tests have demonstrated its resilience: even after applying 5 pre-loads at 2/3 of the test force (266.3 kN), the load was further increased to the full test force of 400 kN. Remarkably, the CW6 exhibited no signs of cracking or fracture and successfully withstood the maximum force specified for its class. Crafted from high-strength materials, making it suitable for any traffic application.

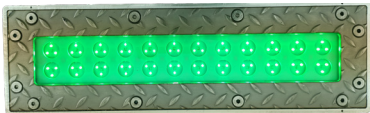
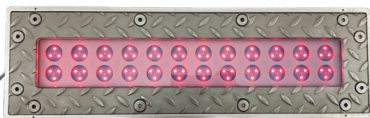
The CW6 LED Crosswalk Light comes in two options: one with white LEDs and another with RGB LEDs. The RGB version operates in accordance with traffic light configurations. Additionally, the system can be powered either by electricity or solar energy. Notably, it boasts exceptionally low power consumption.

Key Features:

- **Protection Index IP68 and IK10:** The US Reflector CW6 is built to withstand the elements, ensuring longevity and reliability.
- **Low profile:** Does not disturb the circulation
- **Large:** lighted area for visual impact
- **Anti-Skidding Surface Treatment:** Motorcycles and bikes can traverse the crosswalk safely, minimizing slipping accidents.
- **Waterproof Design:** Impervious to rain and moisture, thanks to the magic gel that shields every internal component.
- **Straightforward Installation and Cost-Effective Maintenance:** Unlike competing systems, the CW6's installation process is hassle-free, and maintenance costs remain low. This minimizes disruptions to traffic flow during maintenance activities.
- **Efficient Electronic Module Replacement:** The CW6's innovative structure allows rapid and easy replacement of the electronic module within the crosswalk. No need for drilling holes or removing the entire device from the soil—an essential advantage that eliminates road cuttings and associated expenses.
- **Stainless-Steel Alloy and Polycarbonate Construction:** The CW6's top is crafted from high-strength materials, making it suitable for any traffic application.

Applications:

- Ideal for installation in crosswalks
- Same model for crosswalk entries and zebra crossing
- Suitable for regular traffic zones of vehicles
- Wired system that can be powered by electric or solar energy

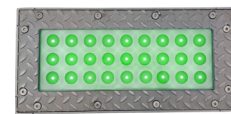


MODES OF OPERATION:		Modes of operation steady or flashing or sequential are available with external controller
LED Type	5mm / RGB	
LED Quantity	24 or 72 LEDs	
LED Color	White, Red, Green, Amber	
Lens Configuration:	120° Opening angle matrix	
Electrical Features		
Power	12V	24V
White	24 LEDs 1.15W	24 LEDs 3,84W
Red	24 LEDs 5.80W	24 LEDs 11.50W
Green	12V: 4,20W	24V: 11,50W
Amber	12V: 7,30W	24V: 16,15W
Working Temperature	-13°F to 185°F	-25°C to +85°C

MECHANICAL FEATURES:	
Cover	Stainless steel alloy with polycarbonate
Base	Aluminum
Wight	15.5 Lbs (7kg)
Dimensions 24 LEDs	19.7" x 5.9" x 2.25" (500 x 150 x 57mm)
Dimensions 72 LEDs	19.7" x 9.5" x 1.7" (500 x 240 x 43mm)
Protection Index	IP68, IK10



19.7" x 5.9" x 2.25"



19.7" x 9.5" x 1.7

ITEM No.	DESCRIPTION	ITEM No.	DESCRIPTION
2A-CW6-24-R	Red 24 LED Crosswalk Light	2A-CW6-72-R	Red 24 LED Crosswalk Light
2A-CW6-24-G	Green 24 LED Crosswalk Light	2A-CW6-72-G	Green 24 LED Crosswalk Light
2A-CW6-24-A	*Amber 24 LED Crosswalk Light	2A-CW6-72-A	*Amber 24 LED Crosswalk Light
2A-CW6-24-W	White 24LED Crosswalk Light	2A-CW6-72-W	White 24LED Crosswalk Light