



GUIDESTAR SR-40

Wireless Solar LED Flush Mount Markers



The GuideStar SR-40 is a high powered LED marker that operates on solar power and designed to be snow plowable. Super strong structure designed to withstand heavy traffic circulation including heavy trucks.

Control unit allows the operator to control the LED lights after installation

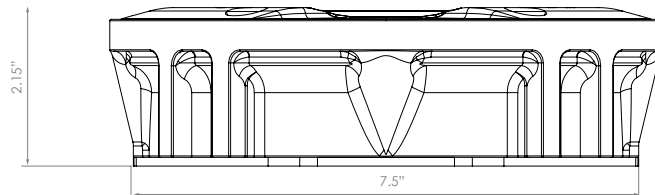
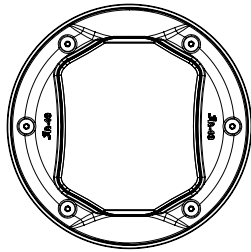
■ APPLICATIONS

- Dynamic road markings
- Redirection of traffic lanes
- Toll Booth advance warning lights
- Tunnels and covered roadways
- Dangerous turns
- Bicycle lanes
- Pedestrian crosswalks
- Wrong way markings





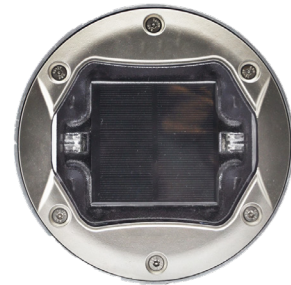
GuideStar SR-40 road stud is ideal for locations with low sun exposure due to its high performance photovoltaic solar module. Rugged construction with a mechanical resistance of 160 tonnes ensures suitable for all snowplowing applications.



CHARACTERISTICS

The GS SR-40 road stud has low power RF with 868MHz network communication. The technology used in the SR-40 increase the performance of solar power studs with energy storage by battery or capacitor.

The main advantage of SR-40 is the micro controller technology inside each stud, which allows several beneficial features and control options even after installation.



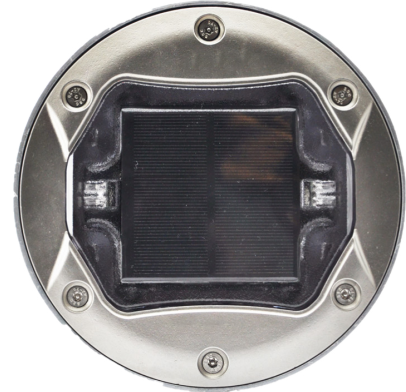
TECHNICAL DATA

MATERIAL	Body : Aluminum Stainless Steel / Lens : Polycarbonate
DIMENSIONS	Diameter : 7.5" (190mm) / Height: 2.15" (54.5 mm)
INSTALLATION surface height	Flush
FIXATION	Adhesive / bituminous
OPTICS	
OPTICAL PRINCIPLE	Power LEDs with reflectors
OPTICAL EFFICIENCY	Controllable light output and adaptable customer applications
COLORS	White, Warm White, Red, Amber, Green, Blue
LED QUANTITY	2 LEDs (uni-directional), 4 LEDs (bi-directional) - 5mm
QUALITY	
COMPRESSION / IMPACT RESISTANCE	> 160 Tonnes
ELECTRIC	
VOLTAGE	Solar
POWER	Battery or Capacitor



■ FEATURES

- Ideal for locations with low sun exposure
- Snow Plow ready
- Low power RF with 868 MHz network communication
- Robust construction, suitable for harsh conditions
- SLEEP mode to prevent discharge during storage/transport
- Constant brightness during all functioning period
- Protection against deep discharge of the batteries
- High performance photovoltaic solar module
- Maintenance mode to adjust studs, read logs and perform tests
- Energy storage in super capacitors or batteries
- Internal prismatic system
- High intensity MegaLux LED's provide 3000 + ft of visibility
- Several LEDs color options for all kind of applications
- Easy maintenance
- Stud evolution features:
 - Wake Up/Sleep Function
 - Definition of the Working Period
 - Operation Mode Flash/Always ON/Sequential for each side
 - Flash Rate
 - Night Level Detection
 - Operation Mode Uni or Bi-directional
 - Independent LED control
 - Low Temperature
 - Maintenance Mode



■ OUTSTANDING FEATURES

- Intelligent RF communication all operator to change multiple parameters even after installation:
 - Define working time period
 - Set up the number of hours that SR-40 should work after night detection
 - SR-40 road studs do not have to operate all night long. The roads studs will operate during this period or until detects daylight.
 - Select the stud's operation mode between Flash, Always On or Sequential for each side.
 - Adjust of the flash rate after installation.
 - Adjustment of the lighting level detection (Lux)
 - Modify the light direction to Uni or Bi-directional.
 - Select independently each LED side how many led's enabled (one or both).
 - Detects low temperature on roads and change the LEDs behavior to warn drivers about the dangerous weather conditions.
 - Log File assistance, if a problem with the stud is detected the unit is able to make an internal log to discover what are the causes of the problem
 - Ability to activate the maintenance mode, especially useful for the following changes:
 - For Road cuts
 - To Find installation problems
 - To Adjust the road studs light level detection to installation site
 - To Obtain road stud internal log
 - To Enable or disable one stud or all at once