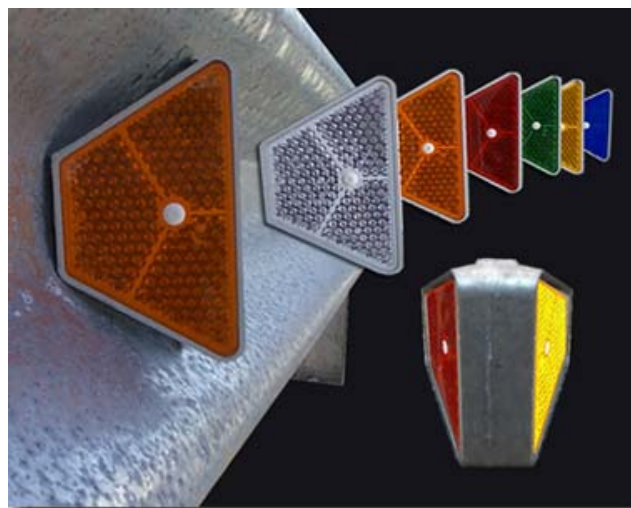
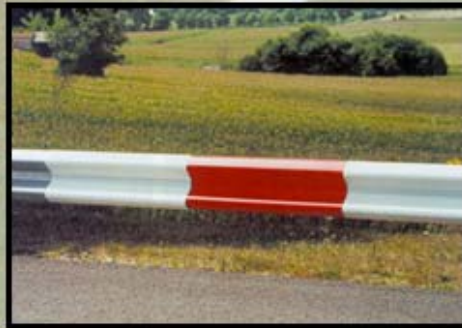




ROADSIDE DELINEATION



ROAD SIDE DELINEATION





RAIL BRITE

Illuminate dangerous curves with Rail Brite guard rail warning system.

ROAD SIDE DELINEATION

Rail Brite is an easy to install guard rail enhancement system designed to illuminate curves and winding roads. Rail Brite outlines roadways with perspective and depth to all oncoming motorists. Effectively brighten any standard guard rail system in seconds. Rail Brite illuminates guard rails during dusk, fog and rain allowing motorists to easily locate the extremities of the road, thereby enhancing driver awareness.

Rail Brite's alternating colors provide guidance during the day while its Diamond Grade 3M reflective film provides night direction.

ILLUMINATE CURVES



Rail Brite guard rail warning system greatly enhances "Day and Night" safety and visibility by informing approaching motorists of danger.

Easy to install, Rail Brite effectively illuminates guard rails from a greater distance allowing approaching motorists to slow down and negotiate oncoming turns with better control.

Rail Brite's alternating colors provide day time visibility.

Rail Brite's colored flexible plastic guard rail covers illuminate dark areas that may be affected by shadowing, trees, fog and old rusted guard rails which reduce visibility.

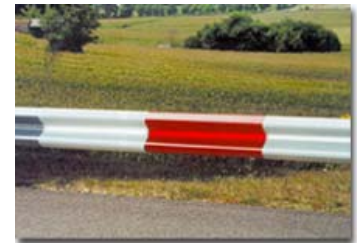


Rails are 39 inches in length with molded "Easy Clips" for instant effortless attachment to guard rails.

ADVANCED FEATURES

- Fast and easy installation, no screws, glue, or tape required.
- Lightweight plastic pre-formed flexible material permits Rail Brite to be mounted. Simply insert the bottom and lift the opposite end over the top part of the Guard Rail and insert the "U"-formed end piece into position.
- Rail Brite does not alter the Guard Rail in any way, thus representing no danger in the event of impacts.
- UV and low temperature resistant.
- Durable
- No maintenance required.

GUARD RAIL GUIDANCE

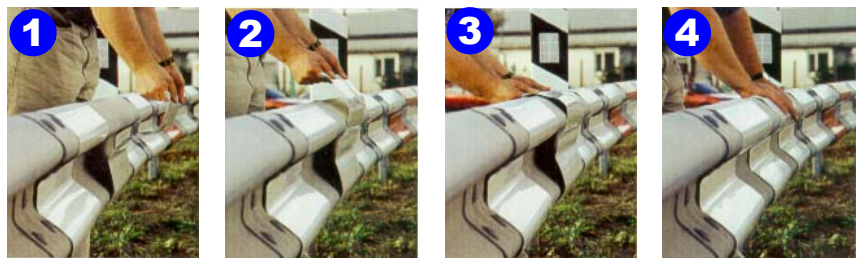


INSTALLATION

Start behind guard rail center

1. Insert lip at bottom of Rail edge.
2. Lift the Rail Brite upward.
3. Pull lip upwards over top of rail
4. Release and insert rail edge into Rail Brite lip. Installation complete.

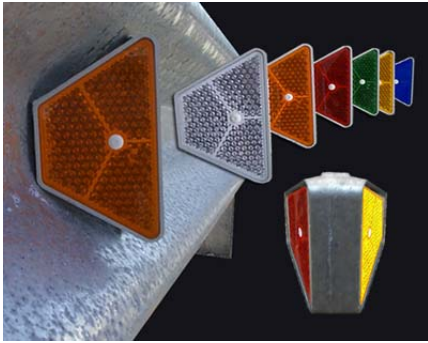
Products include easy to follow Installation instructions



If permanent fixation is required, use double sided pressure sensitive tape or rivets.

DESCRIPTION	WEIGHT	ITEM #	WITH REFLECTIVE FILM	WITHOUT REFLECTIVE FILM
White Rail Brite	1.5 lbs	02230-WW	\$	\$
Yellow Rail Brite	1.5 lbs	02230-YY	\$	\$
Red Rail Brite	1.5 lbs	02230-RR	\$	\$

ACCESSORIES	SIZE	ITEM #	DESCRIPTION	AVAILABLE	COST
PS adhesive tape	1.5" x 4 mm	ADH4-15-FT	1 1/2 wide PS adhesive tape	per linier ft.	\$
PS adhesive tape	3" x 1 mm	ADH1-3-FT	3 inch wide PS adhesive tape	per linier ft.	\$
Aluminum rivits	1/4"	0903-14	Fixation with rivits	each	\$



GUARD RAILS

Inner and upper guard rail mount reflectors for maximum visibility

Next generation guard rail reflectors provide clarity, durability and resistance when installed on new and existing guard rails. Unlike metal supports, plastic guard rail reflectors are non-corrosive and do not expose a sharp edge that may be harmful if struck. High power prismatic reflectors are interchangeable and will not fade or crack. Reflective lenses are built with three (3) separate chambers preserving their prismatic structure and assuring light reflection even under severe road side conditions.

Single and double sided guard rail reflectors are angled directly into the flow of traffic thereby assuring maximum visibility to all oncoming vehicles. Aluminum double sided reflectors provide high resistance to sensitive areas.

RGC SINGLE SIDED INNER RAIL MOUNTS



ABS single sided reflector mounts are designed to fit to all standard guard rails utilizing any one of the center rail support bolts. Significantly enhance guard rail visibility with RGC single sided guard rail reflectors with retro vision characteristics.



Quickly renew old and faded guard rail markers with "Ready Stick" Trapezoid reflectors

Retro vision prismatic reflectors provide as much as 2600 cd/ft of light reflection contained within their chamber sealed reflective shells.

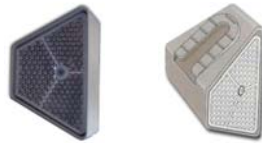
RGF SINGLE AND DOUBLE SIDED INNER RAIL MOUNTS



Lightweight ABS single sided and double sided reflectors offer a simple and economic visual direction device for guard rails. Equipped with 3M Diamond grade reflective film

Mounts to upper connecting guard rail bolt.

DRGP ABS DOUBLE SIDED INNER RAIL MOUNTS



ABS double sided reflector mounts fit all standard guard rails utilizing any one of the center rail support bolts. Pre-equipped with one or two trapezoid interchangeable prismatic reflectors, they provide motorists with a well defined, outlined roadway.



DRGA ALUMINUM RAIL MOUNTS

Color combinations can be used to visually warn motorists of wrong ways. Pre-equipped red/white or red/yellow double sided reflectors are ideally suited for freeway exits, one way avenues and roads.

REFLECTOR MOUNTS FOR WOOD FENCES



Enhance rural roads, private ways, and parks with fence mount reflectors and supports. Requires two (2) screws or nails for fixation.

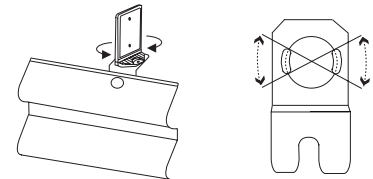
Fits both DRGP and DRGA double sided guard rail reflectors.

G-FLEX UPPER MOUNT REFLECTOR SUPPORT



Top mounted guard rail reflectors offer enhanced visibility for curves and turns. Top mount bracket enables the support to pivot providing sharp, aggressive turns for maximum reflective visibility.

PIVOTAL: - 30° through + 30°



Flexible marker with support, mounts easily on existing rail bolts. Reflector positioning is above rail, keeping the reflector out of the "Splash Zone".

DESCRIPTION	ITEM #	COST
RGC Single sided	0215-W	\$
RGF Single sided	0220-W	\$
RGF Double sided	0225-WW	\$
DRGP ABS double	0194-P-WR	\$
DRGA Aluminum mount	0190-A-WR	\$
Wood fence reflector mount	0198-L1	\$
G-Flex Single height w/bracket -1 face	5100-G1-W	\$
G-Flex Single height w/bracket -2 face	5100-G2-W	\$
G-Flex Double height w/bracket -1 face	5100-G1-WW	\$
G-Flex Single height w/bracket -2 face	5100-G2-WW	\$
Ready stick trapezoid replacement reflectors	0116-W	\$
	100 + pieces	\$

REFLECTOR COLOR CHOICES:
 -W (white) -Y (yellow) -R (red) -O (orange) -G (green) -B (blue)
 Please indicate color preference when ordering



JERSEY BARRIERS

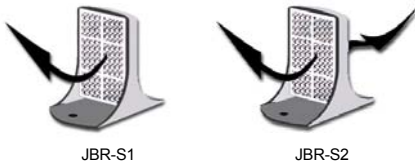
Define and illuminate jersey barriers with single and double height supports.

ROAD SIDE DELINEATION

Injected ABS frames with reflector inserts provide jersey barriers with a high visibility traffic control device that enhances and outlines roadways for all motorists. Available in single and double sided units with choice of lens color. Color coding provides greater flexibility when adapting to specific applications. Jersey barrier reflectors can be mounted on bridge rails and tunnels for night illumination.

Jersey barrier reflectors can be used for highways, work zones, city and rural roads. They install easily with adhesive cement.

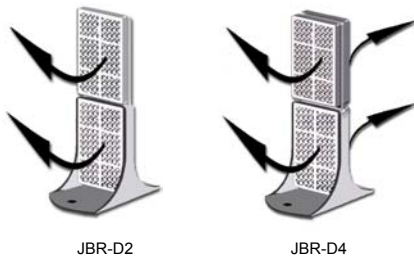
JBR TYPE REFLECTORS



Brighten the road ahead with high power jersey barrier reflectors.

Made with Injected ABS for strength, JBR supports with prismatic reflectors provide exceptional night guidance to oncoming motorists.

Two models available, single and double height for enhanced visibility.



JBR markers can be installed using screws or adhesive cement.

JBA ALUMINUM SIDE MOUNTS



1 up to 8 Reflectors Back to Back

Aluminum side mount jersey barrier reflectors for peripheral light reflection.

Choose reflector colors: -W, -Y, -A, -O, -R, -G, -B

REFLECTORS	ITEM #	DESCRIPTION	COST
1	0180-1-W	Single sided	\$
2	0180-2-WW	Double sided	\$
2	0180-2S-WW	Super imposed	\$
4	0180-4-BWW	Back to back	\$
4	0180-8B-WW	Back to back	\$

JBF TYPE REFLECTORS



Single height JBF-1 Double height JBF-2



Flexible, all temperature jersey barrier reflectors are designed to flex when subjected to impacts. They are equipped with high power reflectors for greater nighttime vision, thereby enhancing safety for all motorists.

JBF model reflectors support up to four (4) reflectors. Made with unbreakable polymers, JBF barrier mount reflectors provide a long lasting traffic safety device.



AST TYPE REFLECTORS



AST type reflectors are single piece reflectors that affix to concrete, steel and wood with contact cement. AST reflectors meet or exceed Federal specifications for traffic control devices. AST reflectors are an effective alternative to conventional reflection systems.



Size: 4 3/8" x 2 1/2" x 2"

AST-F Vandal proof Single or double sided reflector with flexible hinge. Equipped with 3M reflective film.

Available in all colors



Size: 3" x 5 1/4" x 2 1/2"

AST-R1 Jersey barrier reflectors. Single or double sided. Available in amber and crystal or any combination.



Size: 4 1/2" x 2 1/2" x 1"

AST-S1 Angled reflector with 7 square inches of reflective face. Illuminate short radius curves and round obstructions.



Choice of: -W (white) -Y (yellow) -R (red) -O (orange) -G (green) -B (blue)

1 Face	DESCRIPTION	ITEM #	COST	WEIGHT
JBR-S1	Single sided	0140-W	\$	7.5 oz.
JBR-D2	Super imposed	0145-W	\$	15 oz.
JBF-S1	Single sided flex	5100-W	\$	6.7 oz.
JBF-D2	Super imposed Flex	5104-W	\$	10 oz.
AST-F1	Single sided film	6110-W	\$	2.5 oz.
AST-R1	Single sided barrier	6120-W	\$	3 oz.
AST-S1	Angled wall mount	6130-W	\$	1.5 oz.

2 Face	ITEM #	COST
JBR-S2	0140-WW	\$
JBR-D4	0145-WW	\$
JBF-S2	5100-WW	\$
JBF-D4	5105-WW	\$
AST-F2	6110-WW	\$
AST-R2	6120-WW	\$

Prices reflect single units only, please contact your sales representative for quantity pricing

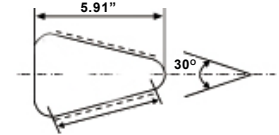
WWW.USREFLECTOR.COM



J6 BLACK TOP

Aesthetically delineate roadways with absolute continuity.

Injected monoblock J6 black top delineators help outline roadway shoulders by providing greater visibility for all traveling motorists. Unique black angle identifies the post's presence by providing day light delineation, especially during snow conditions during the winter season. At night, high powered reflectors characterize the J6 by defining the road ahead. It preserves roadside aesthetics and continuity by utilizing guardrail and jersey barrier half mounts. The J6 is pre-formed with a 30 degree angle, reinforcing its visual capabilities. Bright, prismatic reflectors preserve its distinguished look by projecting light back into the flow of traffic.



ROAD SIDE DELINEATION

J6 FLEXIBLE POP UP



J6 flexible delineator is constructed with a unique mixture of polyethylenes. This mixture allows the post to flex at the base while preserving its rigidity throughout the upper portion. This technique, in conjunction with its triangular shape, allows the post to regain its vertical position without rocking to the left or to the right.

J6 Pop-up easily clips into position utilizing a 12 polyethylene base.



J6 EJECTABLE



J6 COLOR
Available with or without markings

J6 Ejectable delineator post is identical to the J6 Pop-up except it is designed to eject itself from the base during impact. After impact, the J6's design allows the post to be easily re-inserted into its base.

Quickly locate specific sites utilizing mono colored J6 Posts. Post includes administration and / or company markings.

Both pop-up and ejectable delineator posts are secured to the ground by a pre-installed polyethylene base.



ECO-FLEX



ECO-Flex marker post with black cap is fully flexible and traversable. This model is available in any other length and can be equipped with any other reflector.



ECO Flex is a semi-curve flexible, delineator post that is designed to resist twisting and folding forces.

Pre-equipped with a 4 x 6 inch 3M reflective film.



J6 RAIL AND BARRIER HALF MOUNTS FOR ROADSIDE CONTINUITY

J6 guard rail and jersey barrier mount delineators can be used individually or in conjunction with ground mount models. When these products are used together, roadways appear visually aesthetic and are uniformly outlined, an obvious advantage for all traveling motorists.

Rail mounts easily affix to guard rails bolts.



J6 50 GRS



J6 55 GRD



Detailed view



J6 70 CMTS



J6 75 CMTD

J6 top mount jersey barrier delineators easily affix to concrete and plastic barriers with two anchor bolts.

Available in single and double sided units for maximum visibility.



Detailed view

Reflector and reflective film choices on all delineators
-W (white) -Y (yellow) -R (red) -O (orange) -G (green) -B (blue)

ITEM #	DESCRIPTION	PRICE
0250-FX-WW	J6 Pop-up (52" x 6" x 4.7")	\$
0250-EJ-WW	J6 Ejectable (52" x 6" x 4.7")	\$
0250-COLOR	J6 Mono color (78" x 6" x 4.7")	\$
0255-BASE	J6 Ground base (12")	\$
0260-GR1-WW	Single guard rail mount (24")	\$
0260-GR2-WW	Double guard rail mount (24")	\$
0262-JB1-WW	Single jersey barrier Double	\$
0262-JB2-WW	jersey barrier (24")	\$
9000-1M	Eco-flex standard height 40.5"	\$
9000-1MF-W	Eco-flex, no reflectors	\$
9000-1MF-WW	Eco-flex, one reflector	\$
	Eco-flex, two reflectors	\$

All products include easy to follow instructions.



J1 SNOW POSTS

Assure true day and night visibility with J1 Tubular Snow Posts.

ROAD SIDE DELINEATION

J1 Ballast is specifically designed to delineate winding roadways where guard rails are limited or not present. Red pointed top hat accents daytime visibility by eliminating the “wash out” effect created by sunlight. The J1 is equipped with 8 inch 3M Diamond grade reflective film collars, ensuring proper night illumination for all traveling motorists.

The J1 Ballast offers safety enhancement in virtually all types of weather conditions as a result of its height and overall circumference. The J1 Ballast is available in two sizes, 64” and 70”, with a choice of reflective film color the distinctive outlining of roadways.

J1 GUIDANCE DEVICES



Delineators are particularly beneficial at locations where the road alignment might be confusing or unexpected, such as at lane reduction transitions and curves. Delineators are effective guidance devices at night and during adverse weather conditions. An important advantage of delineators in certain locations is achieved by virtue of the fact they remain visible when the roadway is either wet or snow covered.

J1 70” Snow Post is typically utilized on road sides where snow levels are high or in areas where embankments are low, reducing delineation visibility.



Post height: 70 in.
Post width: 8 in.
Circumference: 22 in.

Base height: 12 in.



J1 ballast is supported by a reinforced polyethylene base with multiple fixation capabilities. Base can be secured as a ground footing or it may be anchored or glued to any supporting surface. Post is easy to install with excellent stability features. Post sits firmly in its socket.

J1 SNOW POSTS



J1 Snow Posts play an essential roll for locating road entrances, allowing maintenance crews and traveling motorists to visualize approaching intersections and road separations from a distance. The J1 posts guide motorists through rain, snow and fog.



Extreme temperatures do not affect the J1 Snow Post providing maintenance free solutions while improving road side delineation.



10 ft. SNOW STAKES

Impact resistant PVC snow stakes for simple and effective winter markings.

Post diameter 1 in.
Pre-equipped with 4 in. reflective film

GUARD RAIL CONTINUITY



J1 guard rail mount delineators can be used individually or in conjunction with ground mount models. When used together, roadways become visually aesthetic and uniformly outlined for all traveling motorists.

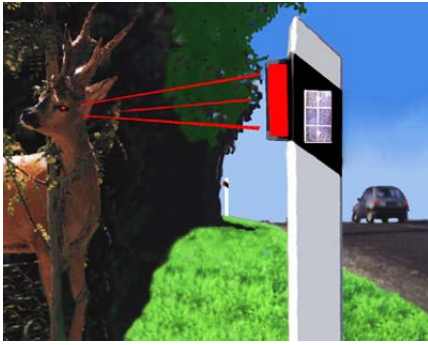


J1 Snow posts are made with high density polyethylene that is incorporated with UV stabilizers.



J1 Snow posts can be manufactured in any length upon request.

ITEM #	DESCRIPTION	HEIGHT	WEIGHT	COST
0275-64R-W	J1 Delineator	64 in.	8 lbs	\$
0275-70R-W	J1 Delineator	70 in.	8.5 lbs	\$
0255-J1-B	Base support	12 in.	2 lbs	\$
0280-GRR-W	J1 Guard rail mount	31.5 in.	4 lbs	\$
0290-SS-W	Red snow stake	10 ft.		\$
0295-SS-B	Base support	12 in.		\$



Wild life discourager with optical light reflection for controlled animal crossing.

ROAD SIDE DELINEATION

Red Wild Life discouragers are designed to project light rays onto roadsides during the passing of a vehicle. When the headlights are on, the color formation of the High Powered Red Rayon's Optical double faced lens reflects light away from the road. Invisible to the driver, it alerts the animal to "HALT" or causes it to run in the opposite direction. After the vehicle passes, the animal may cross the road with complete safety.

DISCOURAGER

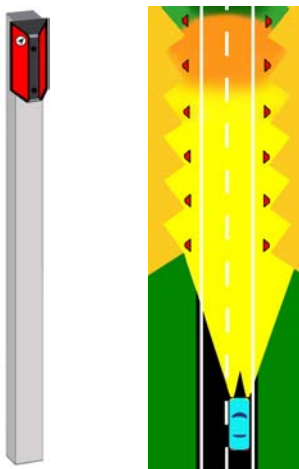
LIGHT PROJECTION

Wild Life Discourager provides safer passage ways for motorists traveling through areas where animals frequently cross roads.

Precision angled optics are illuminated during a vehicle's approach.

Approaching vehicles' head lamps illuminate the discouragers installed along the roadway, halting animals within the projected light area. As the vehicle passes, the optical rays gradually disappear, allowing animals to no longer sense danger and to then cross the road without being endangered.

Example of Reflection



In a night situation, in a moment of passage of the vehicle, the reflection of the headlight's rays on the optical lenses discourage the animals from crossing the road.

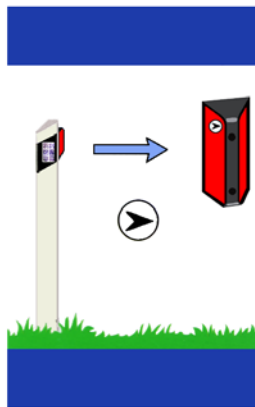
HORIZONTAL Wild Life Discourager



Size: 7 in. x 3 in. x 2.5 in.

Horizontal discourager mounts vertically on virtually any vertical support allowing light rays to project horizontally toward the road shoulder.

Use on flat and slightly sloped roadsides.



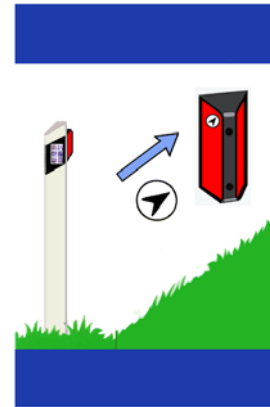
DIAGONAL Wild Life Discourager



Size: 7 in. x 3 in. x 2.5 in.

Diagonal discourager mounts vertically on virtually any vertical support allowing light rays to project upward or downward, depending on the terrain.

Use on steep sloped roadsides.



ITEM #	DESCRIPTION	COST
0270-H	Horizontal wild life discourager	\$
0270-D	Diagonal wild life discourager	\$



PIVOTAL SCREENS

PIVOTAL Anti-blinding screens for all guard rails and jersey barriers.

ROAD SIDE DELINEATION

Adjustable Rotating Anti-Blinding Blades are designed for easy mounting and removal. The supporting base rail has pre-measured slots allowing the blades to quickly slide into position. Interchangeable plastic parts allow the system to be easily constructed on-site, enabling simple maintenance interventions, if required. The innovative design allows the blades to be mounted on any free standing support. Blades can be positioned every 30 degrees thereby ensuring perfect installation even on sharp and winding turns.

Pivotal screens resist exceeding 140 m.p.h.

30 DEGREE PIVOTING



Adjustable rotating anti-blinding blades have alternating angled edges blocking the motorist's visibility from roadside distractions on the opposite side of the traveled way. Anti-blinding screens are essential, especially when oncoming headlight beams present a blinding glare condition to traveling motorists.

Each piece is interchangeable and interlocking for a quickly installed and easily maintainable system. Innovative fixation system allows the blades to be mounted individually or on 4 meter base rails.



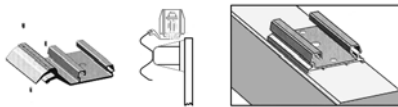
Two base rails available:
 Type 1 for single guard rails
 Type 2 for double sided guard rails and Jersey barriers.



ADVANCED FEATURES



Pivoting Blades are supported on aluminum sections, enabling them to be adapted to all Guard Rails. Installation can be made with 13 ft. long rails (4 Meters) or with individual pieces as shown.



CHARACTERISTICS



Pivoting blades can be positioned every 30 degrees, a feature that responds to all types of road conditions such as : sharp curves, turns, on / off ramps, construction zones, etc...

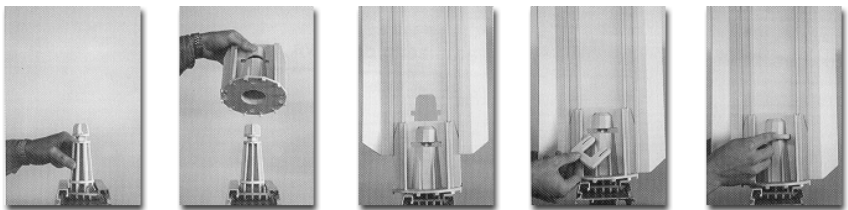
BLADES:

Height: 24 -40 inches
 Width: 10 inches
 Material: Polyethylene
 Mass tinted

RAIL:

Base rail Length: 13 feet
 Individual supports: 6.5 in.
 Material: Galvanized

BLADE ASSEMBLY



Products include easy to follow installation instructions

Complete installation kit for Jersey Barriers

ITEM #	FITS	DESCRIPTION	PRICE PER Linear Foot.
0600-JB-40-OG	Jersey barrier	One 13 ft. base rail and five (5) 24 inch blades	\$
0600-JB-120-OG	Jersey barrier	One 13 ft. base rail and five (5) 40 inch blades	\$

Individual units for Jersey Barriers and Guard Rails

ITEM #	FITS	DESCRIPTION	PRICE
0605-SJB-40-OG	Jersey barrier	Includes One 6.5" rail and one 24" blade	\$
0605-SJB-120-OG	Jersey barrier	Includes One 6.5" rail and one 40" blade	\$
0605-SGR-40-OG	Guard rail	Includes One 6.5" rail and one 24" blade	\$
0605-SGR-120-OG	Guard rail	Includes One 6.5" rail and one 40" blade	\$



ANTI-BLINDING SCREENS

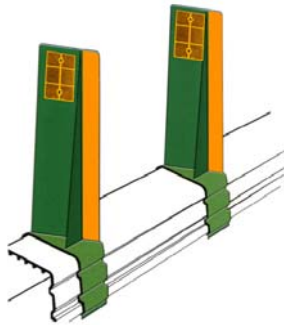
Anti-blinding screens for jersey barriers.

US Reflector's Anti-Blinding Screens are designed to block blinding glare from opposite traffic flow. Blades also protect drivers from distractions such as work zones and other activities taking place on opposite sides of the roadway. Enhance security for the drivers with absolute efficiency. Features: Lightweight with no maintenance required. Installation is fast, simple, with all components interchangeable.

Blades are available in two lengths, 16 inches and 20 inches. Blades clip onto 97 inch (2.5 meter) base rail allowing for instant placement on jersey barriers.

Injected Polyethylene Mass tinted green. Base Rail made with extruded Polyethylene.

TYPE 2 SCREENS



Jersey barrier anti-blinding screens are designed to effectively eliminate blinding glare quickly, simply and easily.

Type 2 anti-blinding screens consist of one 97.5 inch (2.5 meters) base rail and four blades.

Blades are available in 16 inch and 20 inch heights with a width an 8 inch width.

Blades are whole units constructed with a fixed 30 degree angle equipped with dual reinforment ribs.



Anti-blinding screens with a fixed angle feature greatly reduce blinding glare, including distractions on the opposite side of the traveled way.

GUARANTEED SIMPLICITY



SAFE



SECURE



EFFECTIVE

INSTANT INTERVENTION

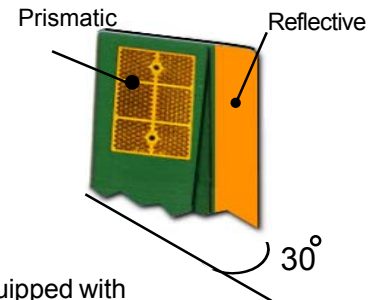
In the event of an accident, the blades can easily be removed, enabling rescue workers to cross over the barriers.

INSTALLATION

Type 2 anti-blinding screens are composed of two parts, base rail and blades. Base rail sits securely on all standard size jersey barriers while blades clip into their locked position.

DIMENSIONS :

- Blade Height: 16" (40 cm)
- 20" (50 cm)
- Blade Width: 8" (20 cm)
- Base Rail: 6.3" x 7.48" x 98.5" (16 x 19 x 250 cm)



ADVANCED FEATURES

Type 2 Anti-blinding screens can be equipped with one-inch reflective strips providing left lane guidance. If additional delineation is required, prismatic reflectors may be attached, allowing outer lane guidance by taking advantage of the blades' 30 degree angle. Reflective film and reflectors may be attached to one or both sides.

ITEM #	WEIGHT	DESCRIPTION	PRICE	COST PER FOOT
0561-R16	1.5 lbs	(1) 97.5" long base rail 2.5 meters with (4) 16 inch blades	\$	
0561-R20	1.5 lbs	(1) 97.5" long base rail 2.5 meters with (4) 20 inch blades	\$	
0561-R	1.5 lbs	Base rail only	\$	
0561-B16		16 inch blade	\$	N/A
0561-B20		20 inch blade	\$	N/A

ACCESSORIES	ITEM #	DESCRIPTION	AVAILABLE	COST
Reflective film	7100-1FE-Y	Engineer grade reflective film	Per side	\$
Reflective film	7105-1FH-Y	High Intensity reflective film	Per side	\$
Reflectors	0112-Y	Prismatic 3.5" x 4" reflectors	Per side	\$