



WORCESTER MA

August 28th 2003

Project Coordinator: George Cancelmo

Partition and Traffic control provided by:

Worcester Department of Public Works

Worcester Police Department

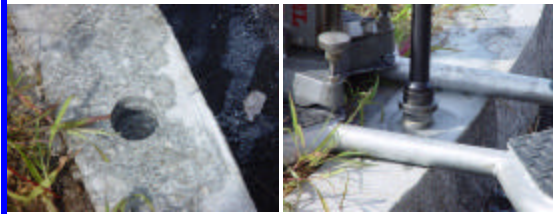
Equipment provided by:

Jack Moore Associates

Products supplied by: US Reflector Co.

Glass marker type 1: 30 Amber 360° Curb Markers
Spacing 32 in. on center

Glass marker type 2: 10 Amber 360° Pavement Markers
Spacing 7 ft on center



Location: Corner of Maywood street
and Lovell street Worcester Ma.