



■ ARMOURSTUD 360° & 180° MARKERS

Optical reflective road markers are constructed from high quality toughened glass, a material that is harder than steel offering enhanced mechanical properties exceeding 38 tons. Optical Toughened glass technology preserves the reflective core and provides unmatched abrasion and wear characteristics.

Two models available, 360-RM1 for unidirectional 360° visibility, and the 180-RM2 for monodirectional 180° visibility. Both markers contain optical reflex technology setting a new standard for the pavement marking industry.

Developed for the essential needs of tomorrows growing roadway systems.

OPTICAL TOUGHENED GLASS

ARMOURSTUD 360-RM1



Dimensions: 3.93 x 1.69 inches

360° UNI-DIRECTIONAL MARKER

Armourstud's 360° unidirectional optical reflex technology reflects light back to its projected source from any area of its 360 degree radius.

Armourstud's optical reflex characteristics provide a precise and distinctive light signal to oncoming vehicles without projecting light in an opposite direction.

ARMOURSTUD 180-RM2



Dimensions: 3.93 x 1.69 inches

180° MONO DIRECTIONAL MARKER

Armourstud's 180° monodirectional optical reflex technology enables the stud to perform from half of its exposed surface.

The opposite side of the marker absorbs entering light beams with no return.

Armourstud monodirectional properties act as a single sided pavement marker providing additional entrance angles up to 180 degrees from face front.

ARMOURSTUD 360-FT1



Dimensions: 3.93 x 1.50 inches

"FLAT TOP" MARKER

Armourstud flat top markers are available in two models: Unidirectional and Monodirectional. Armourstud's low profile marker carries the same characteristics as 360-RM1 and 180-RM2 models. Its protruding optical center is only 1/2 inch in height. Flat top markers are designed for reduced noise impact and can be used in both rural and highway applications.

APPLICATIONS



WWW.USREFLECTOR.COM

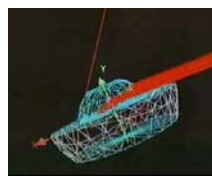
BENEFITS

- Sleek compact design
- Approaching 360° visibility
- Optical toughened glass
- Compact design
- Self cleaning lens
- Precise light reflex.
- Guaranteed 5 years

CHARACTERISTICS

- Optical tempered glass
- Mechanical strength >38 tons
- Unidirectional visibility
- Monodirectional visibility
- Optical reflection : 1268 cd/fc at 0.3 degrees
- 360-RM1 dimensions: 3.93 x 1.69 inches
- 180-RM2 dimensions: 3.93 x 1.50 inches

INSTALLATION



Available colors: White, Yellow, Orange, Green, Red and Blue.



360°	180°	360° Flat Top	180° Flat Top
360-RM1-W	180-RM2-W	360-FT1-W	180-FT2-W
360-RM1-Y	180-RM2-Y	360-FT1-Y	180-FT2-Y
360-RM1-O	180-RM2-O	360-FT1-O	180-FT2-O
360-RM1-R	180-RM2-R	360-FT1-R	180-FT2-R
360-RM1-G	180-RM2-G	360-FT1-G	180-FT2-G
360-RM1-B	180-RM2-B	360-FT1-B	180-FT2-B