



## RAIL BRITE

**Illuminate dangerous curves with Rail Brite guard rail warning system.**

## ROAD SIDE DELINEATION

Rail Brite is an easy to install guard rail enhancement system designed to illuminate curves and winding roads. Rail Brite outlines roadways with perspective and depth to all oncoming motorists. Effectively brighten any standard guard rail system in seconds. Rail Brite illuminates guard rails during dusk, fog and rain allowing motorists to easily locate the extremities of the road, thereby enhancing driver awareness.

Rail Brite's alternating colors provide guidance during the day while its Diamond Grade 3M reflective film provides night direction.

### ILLUMINATE CURVES



Rail Brite guard rail warning system greatly enhances "Day and Night" safety and visibility by informing approaching motorists of danger.

Easy to install, Rail Brite effectively illuminates guard rails from a greater distance allowing approaching motorists to slow down and negotiate oncoming turns with better control.

**Rail Brite's alternating colors provide day time visibility.**

Rail Brite's colored flexible plastic guard rail covers illuminate dark areas that may be affected by shadowing, trees, fog and old rusted guard rails which reduce visibility.



Rails are 39 inches in length with molded "Easy Clips" for instant effortless attachment to guard rails.

### ADVANCED FEATURES

- Fast and easy installation, no screws, glue, or tape required.
- Lightweight plastic pre-formed flexible material permits Rail Brite to be mounted. Simply insert the bottom and lift the opposite end over the top part of the Guard Rail and insert the "U"-formed end piece into position.
- Rail Brite does not alter the Guard Rail in any way, thus representing no danger in the event of impacts.
- UV and low temperature resistant.
- Durable
- No maintenance required.

### GUARD RAIL GUIDANCE

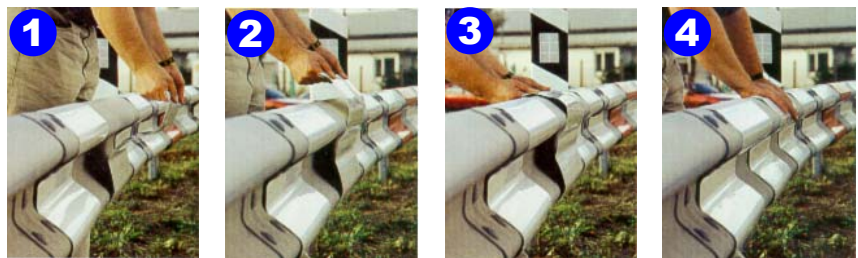


### INSTALLATION

Start behind guard rail center

1. Insert lip at bottom of Rail edge.
2. Lift the Rail Brite upward.
3. Pull lip upwards over top of rail
4. Release and insert rail edge into Rail Brite lip. Installation complete.

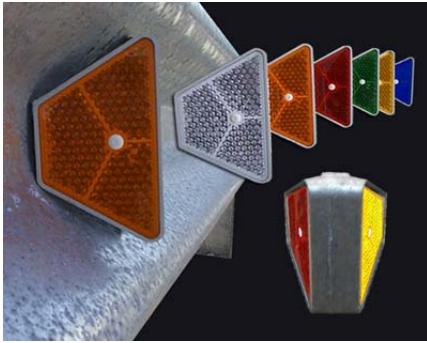
### Products include easy to follow Installation instructions



If permanent fixation is required, use double sided pressure sensitive tape or rivets.

DESCRIPTION	WEIGHT	ITEM #	WITH REFLECTIVE FILM	WITHOUT REFLECTIVE FILM
White Rail Brite	1.5 lbs	02230-WW	\$	\$
Yellow Rail Brite	1.5 lbs	02230-YY	\$	\$
Red Rail Brite	1.5 lbs	02230-RR	\$	\$

ACCESSORIES	SIZE	ITEM #	DESCRIPTION	AVAILABLE	COST
PS adhesive tape	1.5" x 4 mm	ADH4-15-FT	1 1/2 wide PS adhesive tape	per linier ft.	\$
PS adhesive tape	3" x 1 mm	ADH1-3-FT	3 inch wide PS adhesive tape	per linier ft.	\$
Aluminum rivits	1/4"	0903-14	Fixation with rivits	each	\$



**GUARD RAILS**

**Inner and upper guard rail mount reflectors for maximum visibility**

Next generation guard rail reflectors provide clarity, durability and resistance when installed on new and existing guard rails. Unlike metal supports, plastic guard rail reflectors are non-corrosive and do not expose a sharp edge that may be harmful if struck. High power prismatic reflectors are interchangeable and will not fade or crack. Reflective lenses are built with three (3) separate chambers preserving their prismatic structure and assuring light reflection even under severe road side conditions.

Single and double sided guard rail reflectors are angled directly into the flow of traffic thereby assuring maximum visibility to all oncoming vehicles. Aluminum double sided reflectors provide high resistance to sensitive areas.

**RGC SINGLE SIDED INNER RAIL MOUNTS**



ABS single sided reflector mounts are designed to fit to all standard guard rails utilizing any one of the center rail support bolts. Significantly enhance guard rail visibility with RGC single sided guard rail reflectors with retro vision characteristics.



**Quickly renew old and faded guard rail markers with "Ready Stick" Trapezoid reflectors**

Retro vision prismatic reflectors provide as much as 2600 cd/ft of light reflection contained within their chamber sealed reflective shells.

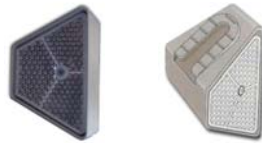
**RGF SINGLE AND DOUBLE SIDED INNER RAIL MOUNTS**



Lightweight ABS single sided and double sided reflectors offer a simple and economic visual direction device for guard rails. Equipped with 3M Diamond grade reflective film

Mounts to upper connecting guard rail bolt.

**DRGP ABS DOUBLE SIDED INNER RAIL MOUNTS**



ABS double sided reflector mounts fit all standard guard rails utilizing any one of the center rail support bolts. Pre-equipped with one or two trapezoid interchangeable prismatic reflectors, they provide motorists with a well defined, outlined roadway.



**DRGA ALUMINUM RAIL MOUNTS**

Color combinations can be used to visually warn motorists of wrong ways. Pre-equipped red/white or red/yellow double sided reflectors are ideally suited for freeway exits, one way avenues and roads.

**REFLECTOR MOUNTS FOR WOOD FENCES**



Enhance rural roads, private ways, and parks with fence mount reflectors and supports. Requires two (2) screws or nails for fixation.

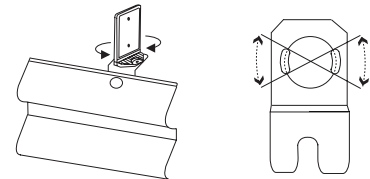
Fits both DRGP and DRGA double sided guard rail reflectors.

**G-FLEX UPPER MOUNT REFLECTOR SUPPORT**



Top mounted guard rail reflectors offer enhanced visibility for curves and turns. Top mount bracket enables the support to pivot providing sharp, aggressive turns for maximum reflective visibility.

**PIVOTAL: - 30° through + 30°**



Flexible marker with support, mounts easily on existing rail bolts. Reflector positioning is above rail, keeping the reflector out of the "Splash Zone".

DESCRIPTION	ITEM #	COST
RGC Single sided	0215-W	\$
RGF Single sided	0220-W	\$
RGF Double sided	0225-WW	\$
DRGP ABS double	0194-P-WR	\$
DRGA Aluminum mount	0190-A-WR	\$
Wood fence reflector mount	0198-L1	\$
G-Flex Single height w/bracket -1 face	5100-G1-W	\$
G-Flex Single height w/bracket -2 face	5100-G2-W	\$
G-Flex Double height w/bracket -1 face	5100-G1-WW	\$
G-Flex Single height w/bracket -2 face	5100-G2-WW	\$
Ready stick trapezoid replacement reflectors	0116-W	\$
	100 + pieces	\$

**REFLECTOR COLOR CHOICES:**  
 -W (white) -Y (yellow) -R (red) -O (orange) -G (green) -B (blue)  
 Please indicate color preference when ordering